

# Wood Ley Community Primary School



## Newsletter

December 2015

Wood Ley CP School  
Lowry Way  
Stowmarket  
Suffolk, IP14 1UF

Tel: 01449 616038  
Fax: 01449 672261

Email:  
[admin@woodley.suffolk.sch.uk](mailto:admin@woodley.suffolk.sch.uk)

Website:  
[www.woodley.suffolk.sch.uk](http://www.woodley.suffolk.sch.uk)

### Safety Reminder

Please could you help us to keep the children safe by ensuring they do not cross the school car park at the start or end of the school day. We have a mini bus which uses the car park and it is unsafe for the children to be walking across the car park.

Dear Parents,  
Christmas has arrived at school and the rooms are ringing with Christmas songs. We are looking forward to seeing you all at one of the performances. A huge thank you to all of the staff who have worked hard to organise the plays, props and songs. It is an extremely busy time of year and they have worked tirelessly to make this such an exciting time for the children.



As you may have noticed the Year 5 / 6 outside area is taking shape, the outdoor classroom is completed now and the picnic benches have arrived. We are waiting for a pathway to be laid which will enable the older children to use this space throughout the year. This will reduce the amount of children on the playground as well as providing some personal space for the older students. We hope to open the area at the Carols by Candlelight Service on Wednesday 16th December. A huge thank you to Mr Keeling for building the structure and to the Friends of Wood Ley for funding this development. We know that all of the children will have the opportunity to enjoy this space as they move through the school.

### County Council Risk Rating

The council rates schools as Green, Amber or Red according to an assessment of the risk of their performance becoming unacceptably low as defined by the Government's Department for Education. Green indicates that there are not considered to be risks, Amber that there are some risks and Red that there are serious risks. Our school is Risk Rated Green. The risk rating scheme is designed to identify potential problems that might damage the school's future performance. Identifying risks helps the school to ensure good or better learning for all pupils.



### New Parent Mail

We will be launching the new and improved parent mail service in the new year. The new package offers additional features such as permission slips and payment schemes which will be phased in throughout the term.

# Wood Ley Stars

Hazel Class: Shannon, Jyotsna, Samuel,  
Shaciara

Acer Class: Shona ( English) Liam, Naomi,  
Daisy

Cedar Class: Ethan, Abbie, Shona, Sinead

Poplar Class: Kezia, Gracie, Olivia, Amy,  
Zane

Maple Class: Tayla, Jessica, Grace, Emma,  
Chloe

Beech Class: Elsie, Kara, Ruby

Cherry Class: Harry, Sara, Leo

Oak Class: Reece, Ashton, Brooke,  
Jasmine, Aiden

Elm Class: Lucy, Cole, Elsie, Esme

Congratulations to all children awarded  
Star of the Week detailed above..



## Friends of Wood Ley Update

We are looking forward to seeing you at the Festive Fun Night on Friday 4th December, there are lots of new exciting stalls for you to buy Christmas gifts. Can we remind you that the 12 days of Christmas cards need to be returned by Wednesday 2nd December.



The Friends of Wood Ley have managed to book a pantomime again this year to help the children celebrate Christmas. Cinderella will be arriving at school on Friday 18th December to entertain the children. The children have always enjoyed this end of term treat and we are extremely grateful for their kindness.

Can we send a huge thank you to the parents who have volunteered to help the Friends lay the base for the long awaited shed.

## Sporting News

The year 6 children thoroughly enjoyed their transition sports event on Wednesday 25th November at the leisure centre. We were extremely proud of their determination and co-operation, working collaboratively in cross school groups. We were delighted to announce that Jake received a gold award for excellent sportsmanship, co-operation and team work.

## Relief Mid Day Supervisor

We are currently looking to recruit some additional relief Mid Day Supervisors who would like to join our team on a supply cover basis. If you are interested please contact the school office where your name will be added to our relief list.



# School Visits & Activities

## Foundation Classes

In the Spring Term the children will be learning about animals from around the world. They will be developing their technology skills to make small books about polar animals, jungle animals and desert animals.



As many of you may know Mrs Spinks has taken over as the special needs co-ordinator (SenCo), if you have any worries or concerns regarding your child please contact Mrs Spinks, she is happy to meet with you.

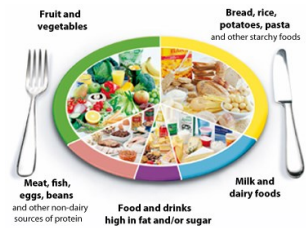
## Key Stage 1 Classes

The teachers are busy planning new topics for the Spring Term in Key Stage 1. The children will be learning all about different types of transport.



## Lower Key Stage 2

The children will be learning about healthy eating in the first half of the spring term which is extremely appropriate following the festive holidays. We are looking forward to welcoming Miss Watson back to Lower Key Stage 2 ready for the start of term.



## Upper Key Stage 2

The children in years 5 and 6 will be learning about Egypt in the Spring Term, It is an exciting topic and I am looking forward to seeing what the children will be doing.

### Salvation Army

I am extremely proud of the children at Wood Ley, especially at a time when many are concentrating on Christmas and gifts, fun and festivities. Several children have been to see me to express their concerns about homelessness at Christmas. I have contacted the Salvation Army with whom we have developed close links over the years. They are delighted that our children wish to help others, we have suggested that the collection we make following the Christmas productions in school could be donated to the Salvation Army to support homeless people. Major Beverley is happy to come into school to talk to the children in the New Year about the work they do to help others. In addition, the Night Shelter Project in Ipswich are always eager to receive donations such as toiletries, warm socks and hats which they hand out to people in need in the local area. We are happy to open a collection station at school for the children to bring the items they wish to donate, we can pass these on to the Salvation Army who will ensure they reach the Night Shelter.

For further information please visit their web site [www.iwns.org.uk](http://www.iwns.org.uk).



# Diary Dates & Term Dates

## December

1st December— Christmas Tree Festival at St Peter's and St Mary's church, 6pm start.

2nd December— Choir singing at Bury St Edmunds Cathedral

4th December— Friend's Festive Fun Night 5.30 pm start

7th December— Christmas Productions Key Stage 1 at 1.45pm followed by Lower Key Stage 2 at 2.30pm

8th December— KS1 Christmas Production at 2.00pm , Lower KS2 at 6.30pm

9th December— Lower KS2 Christmas Production at 2.00 pm, KS1 Christmas Production at 6.30pm

11th December— Foundation Stage Christmas Surprise 10.30—11.00 and 2.45—3.15 pm

11th December— Upper Key Stage 2 Enterprise Afternoon at 2pm—4pm

16th December— Upper Key Stage 2 - Carols by Candlelight

17th December— Children's Christmas Lunch

18th December— Pyramid Productions Presents—Cinderella

## January

4th January— non - pupil day, school closed to pupils

## Term Dates 2015/2016

### Autumn Term 2015

*Wednesday 2 September—Friday 18 December 2015*

### Spring Term 2016

*Monday 4 January—Thursday 24 March 2016*

*(Half Term—week commencing Monday 15 February 2016)*

### Summer Term 2015

*Monday 11 April—Thursday 21 July 2016*

*(Half Term—week commencing Monday 30 May 2016)*

Please note that from within the above dates, five non-pupil days will be determined by individual schools. The non-pupil days for Wood Ley School will be:

Wednesday 2 September 2015, Thursday 3 September 2015,  
Monday 4 January 2016, Monday 11 April 2016, Friday 27  
May 2016

## Great Ormond Street Hospital

We are extremely proud of our pupils at Wood Ley School and their compassion for helping others. One of our year 3 students, Bea has recently raised our awareness of the work Great Ormond Street Hospital does for children. She shared her thoughts during a whole school assembly and the children were very keen to support this worthwhile charity. The school council are gathering the views of pupils and they hope to have a themed non school uniform day on Friday 18th December. More details will follow.

