



Wood Ley Community Primary School



Newsletter

April /May 2016

Wood Ley CP School
Lowry Way
Stowmarket
Suffolk, IP14 1UF

Tel: 01449 616038
Fax: 01449 672261

Email:
admin@woodley.
suffolk.sch.uk

Website:
www.woodley.
suffolk.sch.uk

Reminder:

Please register with
Parentmail to ensure
you receive current
information.

Dear Parents,

Thank you for the supportive comments about the Ofsted report we are very pleased with the outcome, confirming that we continue to be a good school. We are looking forward to the term ahead, as you can see from the term dates it is a busy time in school. We are extremely mindful that the children in year 2 and 6 have some important assessments in May and we are encouraging the children to have plenty of rest, fresh air and healthy eating. We know that they will all do their best.

Willow Structure Re Planted



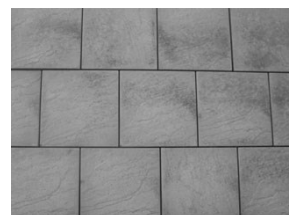
The gardeners arrived at school on Wednesday to plant a new willow structure to replace the one we had to remove when the new year 5 and 6 classrooms were built. The children are very excited and are keen to see how well it grows over the next few months.

Children's Annual Reports

Teachers are busy preparing to write the end of year reports for the children. This year the reports will reflect the new curriculum and assessment arrangements working without levels. Work is planned and assessed around age related objectives, very much like the Foundation Stage curriculum. We will be looking more closely at the new format at the parents' forum on Wednesday 25th May. To streamline the process of sending school reports we will be using Parentmail to email reports to parents. Please could you ensure that you have either registered on Parentmail or school has a current email address.

Help Needed Please

We are very keen for the children to make the best use of the outside space at school. We have bought some basket ball nets for the children from their enterprise money, however we are struggling to have the small area outside the year 5 and 6 building covered with paving slabs within the budget raised. If you are able to help in anyway with this project please could you contact school to help us put this in place for the children.



Wood Ley Stars

Hazel Class: Tamara

Acer Class: Dylan, Rory, Callum

Cedar Class: Ellie, James

Poplar Class: Charlie, Amelia, William,
Kyle, Erin

Maple Class: Tayla, Johnny, Brennan

Beech Class: Emma, Abigail, Kara, Ruby

Cherry Class: Freya, Lily, Harry

Oak Class: Mia, Eve-May

Elm Class: Anita, Zak

Holly: Dotty, James, Maya

Willow: Isla, Oliver

Congratulations to all children awarded

Cyber Safety



The Cyber Safety warriors at our school have been working hard to ensure that the children are aware of ways of keeping themselves safe on the internet as well as behaving in an appropriate way towards each other. Could we please remind parents to be vigilant with regards to the social media sites some of the older children are using. There is a link to a very useful site below which can provide support and advice to parents and children surrounding cyber safety.

www.thinkuknow.co.uk/

Father's Day Breakfast

Friday 17th June



The Mother's Day Tea was very popular last month and as a result Mrs Paddy has kindly offered to hold a Father's Day Breakfast. Parents and children are welcome to school from 8.00 am to share breakfast before school. Further details will follow nearer to the event but please save the date if you are interested.

School Nurse

There is a new service to use for texting the school nurse, this is ChatHealth, a messaging service which is confidential and available Monday—Friday from 9.00 am until 4.30 pm. You can message for advice on all kinds of health issues such as toileting and emotional health and well being. The text number is **07507333356**. Further contact details for the School Nurse service is available on the website: www.suffolk.gov.uk/schoolnursing.

Friends Update

Since the beginning of 2016 a massive £1611 has been raised through bags2school, a disco, quiz night and chocolate bingo. This brings us to an amazing running total of £4043!!! We hope the children and the friends and families of Wood Ley have enjoyed these events as much as us and we thank you for your support!! We have organised for another 'bags2school' collection in May (ready for the Summer wardrobe switch). We are very much looking forward to the Summer Disco on Thursday 26th May and also a Music Quiz in June, date to be confirmed. Thank you and we hope to see you very soon!

School Visits & Activities

Foundation Classes

The current theme for Holly and Willow classes is living things.



The children will be reading Jack and the Beanstalk as a stimulus for growing plants. The topic will progress to looking at mini beasts where the children will have the opportunity to search for mini beasts in the local environment.

Upper Key Stage 2

The children in Year 6 are working hard revising all that they have learnt in preparation for the end of key stage assessment tests. The new topic of the stone age is getting off to an exciting start with a trip to Grimes Graves in Thetford. The children will also be visiting the Museum of East Anglian Life to take part in the science activity week.



Key Stage 1

Food and Farming



The children in Year 1 and 2 are studying food and farming this term with a focus on the journey from farm to fork. They will be learning where the food we eat comes from and how important farming is. The design and technology work will link closely with this topic, looking at designing and making a healthy snack. The children will be learning about food packaging and how this is used in advertising and sales. The children in Year 2 will also be working hard to revise their learning ready for the end of Key Stage 1 assessment in May.

Lower Key Stage 2:

During the summer term children in Year 3 and 4 are learning about Greece from modern and ancient times. An exciting Greek activity day has been planned where the children can experience life as an ancient Greek. They will also be visiting the Museum of East Anglian Life later in the term to take part in the science activity week.

Gardening Club:

Gardening Club are taking part in the "Welly Challenge" this term. They have planned to use wellies and shoes as interesting growing containers and show their creative talents at the Suffolk Show. Children from the club are being asked to bring in old wellies or shoes to use.



Diary Dates & Term Dates

APRIL

Monday 11	P D Day – Children not in school
Tuesday 12	First day of term for children
Thursday 21	LKS2 – Visit to Suffolk Agricultural and Farm Fair – Trinity Park
Thursday 21	UKS2 – Visit to Grimes Graves, Thetford, Norfolk
Friday 22	UKS2 – Visit to Grimes Graves, Thetford, Norfolk
Thursday 28	Kittle Photographic - Whole School Panoramic Photograph

MAY

Monday 2	Bank Holiday
Thursday 5	3.20 – 3.45pm – Show and Share session – Topic Focus
Mon 9 – Fri 13	KS2 SAT's Week
Thursday 12	8.30 – 9.30am – School Nurse 'Drop In' Session
Monday 16	Year 6 children visit High School
Tuesday 17	UKS2 – Visit to Museum of East Anglian Life – Science Week
Friday 20	UKS2 & LKS2 – Visit to Museum of East Anglian Life – Science Week
Wednesday 25	2.30pm – Parents' Forum – New Annual Profile Format
Wednesday 25	6.00 – 7.15pm – Induction Evening for Parents of Pre-School children due to start school during the academic year 2016/17
Thursday 26	Friends of Wood Ley – Children's Disco
Friday 27	P D Day – Children not in school
Monday 30 May – Friday 3 June (inclusive)	– Half-term week

JUNE

Monday 6	3.20 – 3.45pm – Show and Share session – Science Focus
Wednesday 8	3.20 – 4.00pm – September intake children visit the Foundation Stage classes with their Parents
Friday 10	2.00pm – Queen's 90 th Birthday – Tea Party
Monday 13	LKS2 – Ancient Greek Day – 'Portals to the Past'
Friday 17	1.30pm – Whole School Talent Show
Friday 17	Father's Day Breakfast
Monday 20	Kittle Photographic to take Class, Sports Teams and Leavers Group Photographs
Monday 20	National Sports Week
Monday 22	8.30 – 9.30am – School Nurse 'Drop In' session
Friday 24	Sports Day – Picnic lunch at 12.00noon, followed by Sports Afternoon

JULY

Friday 1	Reserve Sports Day
Monday 4	Stowmarket/Stowupland High School Year 6 Transition Day 1
Monday 4	Transfer Afternoon – Foundation – Year 5 children to visit their new classes
Monday 4	1.15 – 3.00pm – September 2016 Foundation children to visit
Monday 4	3.30 – 4.00pm – Parents invited to Meet and Greet with Children's new Class Teacher for September 2016
Tuesday 5	Stowmarket/Stowupland High School Year 6 Transition Day 2
Tuesday 5	Transfer Morning – Foundation – Year 5 children to visit their new classes
Tuesday 5	9.30 – 11.15am – September 2016 Foundation children to visit
Wednesday 6	3.20 – 3.45pm – Show and Share session – Art and DT Focus
Friday 8	3.30 – 5.30pm – Friends of Wood Ley – Summer Fete
Monday 11	8.30 – 9.30am – School Nurse – 'Drop In' Session
Tuesday 12	6.30pm – Years 5 & 6 – Summer Production
Wednesday 13	2.00pm – Years 5 & 6 – Summer Production
Friday 15	6.00 – 8.30pm – Year 6 Leavers Meal/Disco
Monday 18	Year 6 – Visit to Pleasurewood Hills Theme Park
Thursday 21	1.30pm – Year 6 BBQ Farewell – Children & Parents
Thursday 21	Last Day of Term

Term Dates 2016/2017

Autumn Term 2016

Thursday 1 September – Tuesday 20 December 2016
(Half Term – Week commencing 24 October 2016)

Spring Term 2017

Wednesday 4 January – Friday 31 March 2017
(Half Term – Week commencing Monday 13 February 2017)

Summer Term 2017

Tuesday 18 April – Friday 21 July 2017
(Half Term – Week commencing Monday 29 May 2017)

Please note that from within the above dates, five non-pupil days will be determined by individual schools. The non-pupil days for Wood Ley School will be:

Thursday 1 September 2016
Friday 2 September 2016
Wednesday 4 January 2017
Tuesday 18 April 2017
Friday 26 May 2017