

Science: Plants

- observing plants and trees
- germination, what plants need to grow and stay healthy
- seasonal changes
- parts of a plant

**History:** The Great Fire of London

- asking questions
 - how has London changed?
- How do we know?
- Events of The Great Fire of London and consequences.
- Samuel Pepys

**PSHE: Jigsaw)**
Jigsaw Unit Healthy Me:

Keeping myself healthy
Healthy food
Sleep
Keeping clean
Safety

English:

-following our bespoke English Pathways.

**Maths:**

- continuing to follow the White Rose Maths Mastery Scheme.
- see Maths Pathway.

**Art:** The Great Fire of London

- exploring the theme of fire through shape and colour
- colour mixing to create a fire colour palette.
- contrast with silhouettes for buildings

**Key Stage 1 Year B****Spring 2****The Great Fire of London****RE: Prayer and Worship**

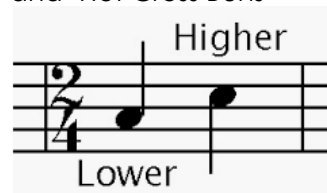
- Why do Christians pray to God and Worship him?
- visit to Bury St Edmunds cathedral to explore prayer and worship through reflective story telling.

**PE:**

- focus on dance including working within a group to put together sequences.
-

**Music: Taking Off**

- exploring pitch and scales
- introducing simple graphic notation
- learning to sing in a round 'London's Burning' and 'Hot Cross Buns'

**Computing:** Scratch Junior
- Year 2 unit.